

# DOC COVID-19 Staff Direction

**COVID 19**



*Effective 03/30/2020*



Connecticut Department of Correction

# Daily Monitoring

## Daily monitoring

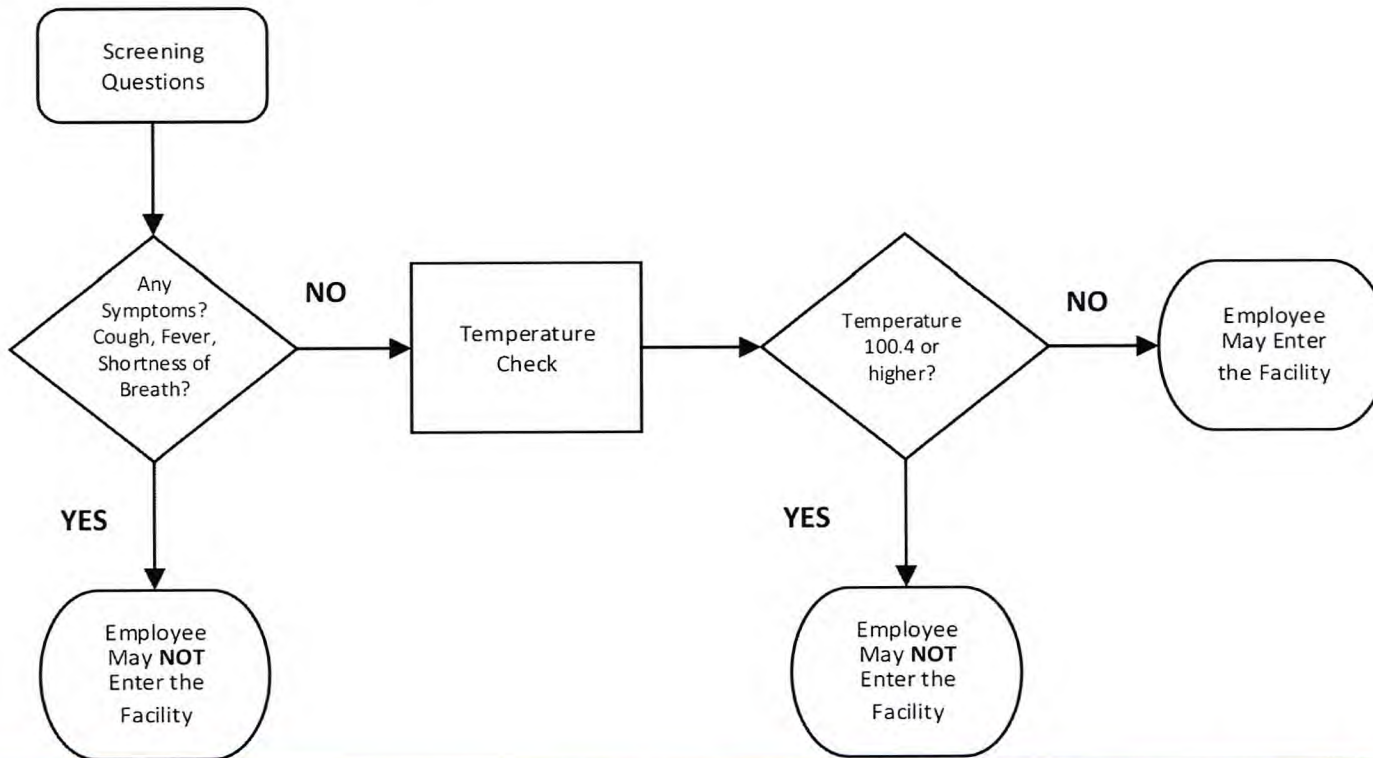
- Each facility / unit through the HR Business Partner sends a spreadsheet detailing staff out due to COVID-19
  - Self-monitoring categories:
    - Symptoms
    - No symptoms
    - COVID-19 Positive
    - Child care
    - Family care

*See DAS/OPM Guidance for Additional Information*

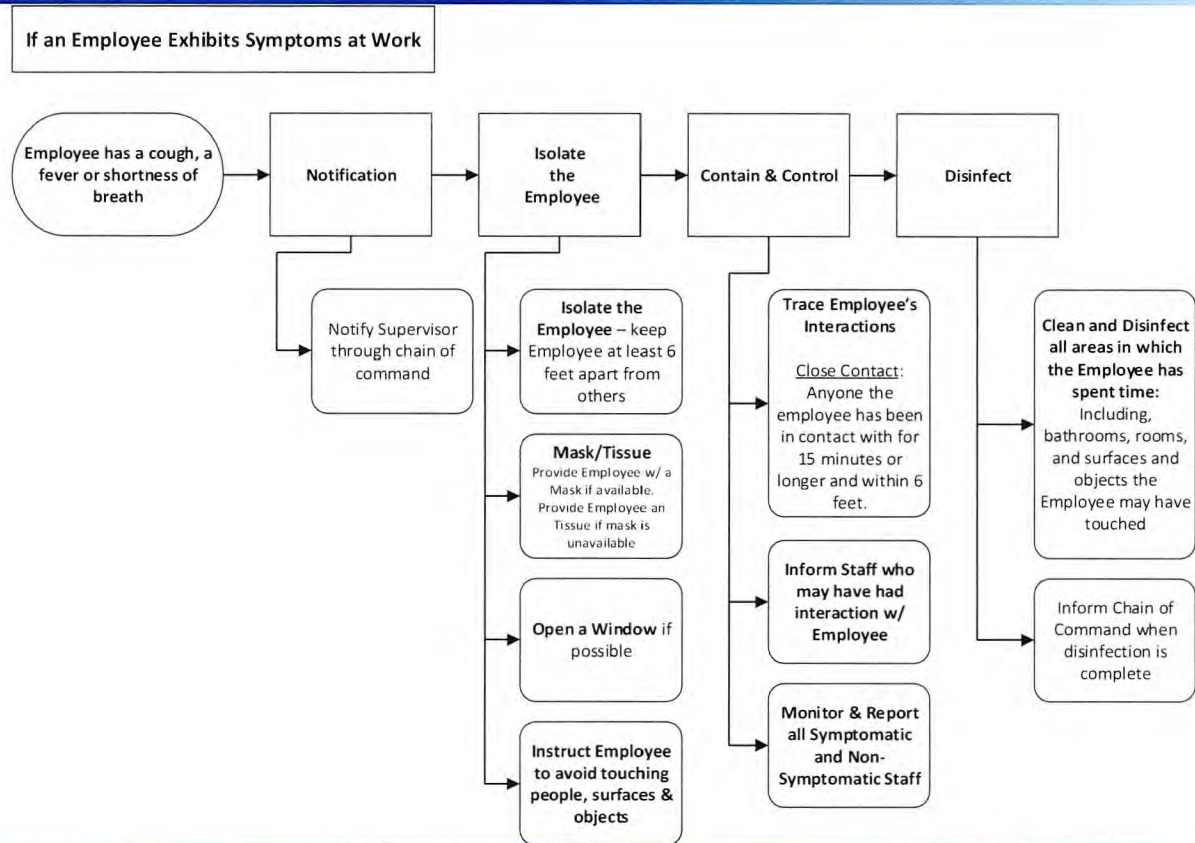


# Daily Employee Screening

## Daily Employee Screening

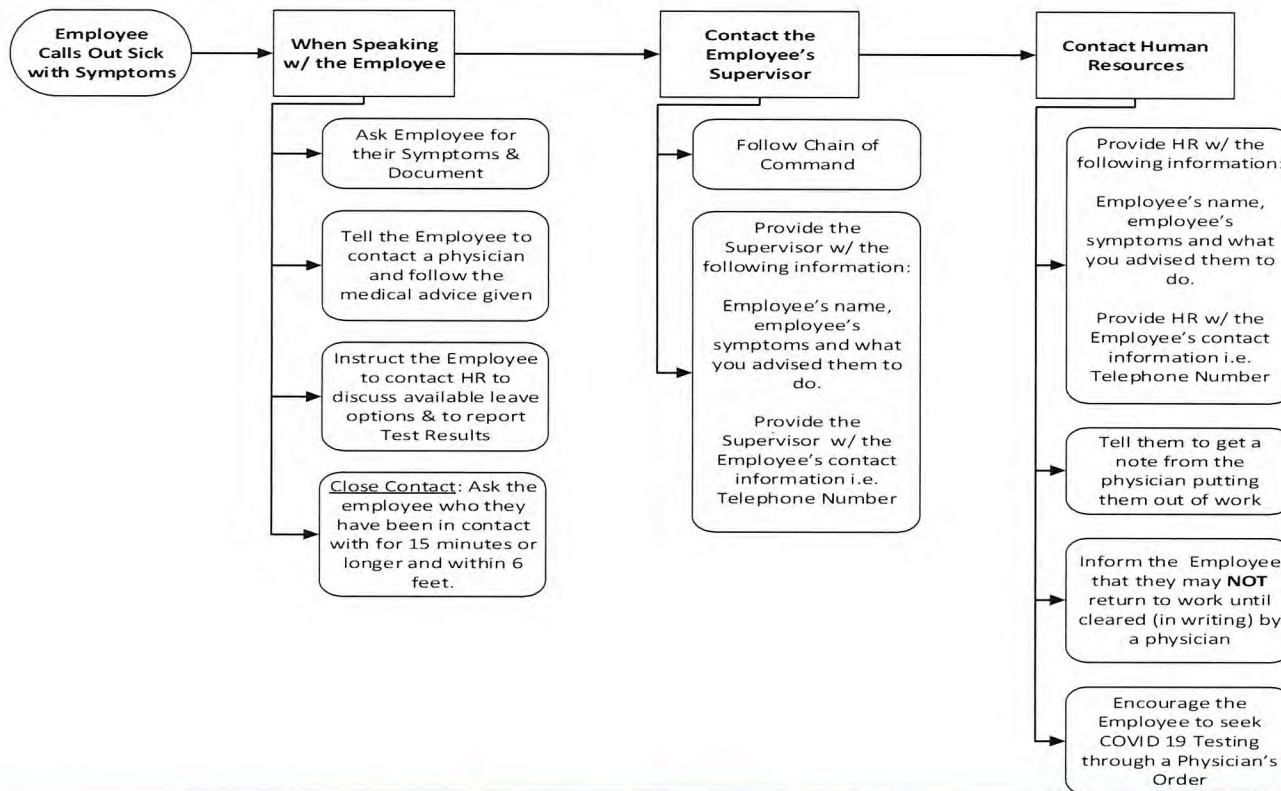


# If An Employee Exhibits Symptoms



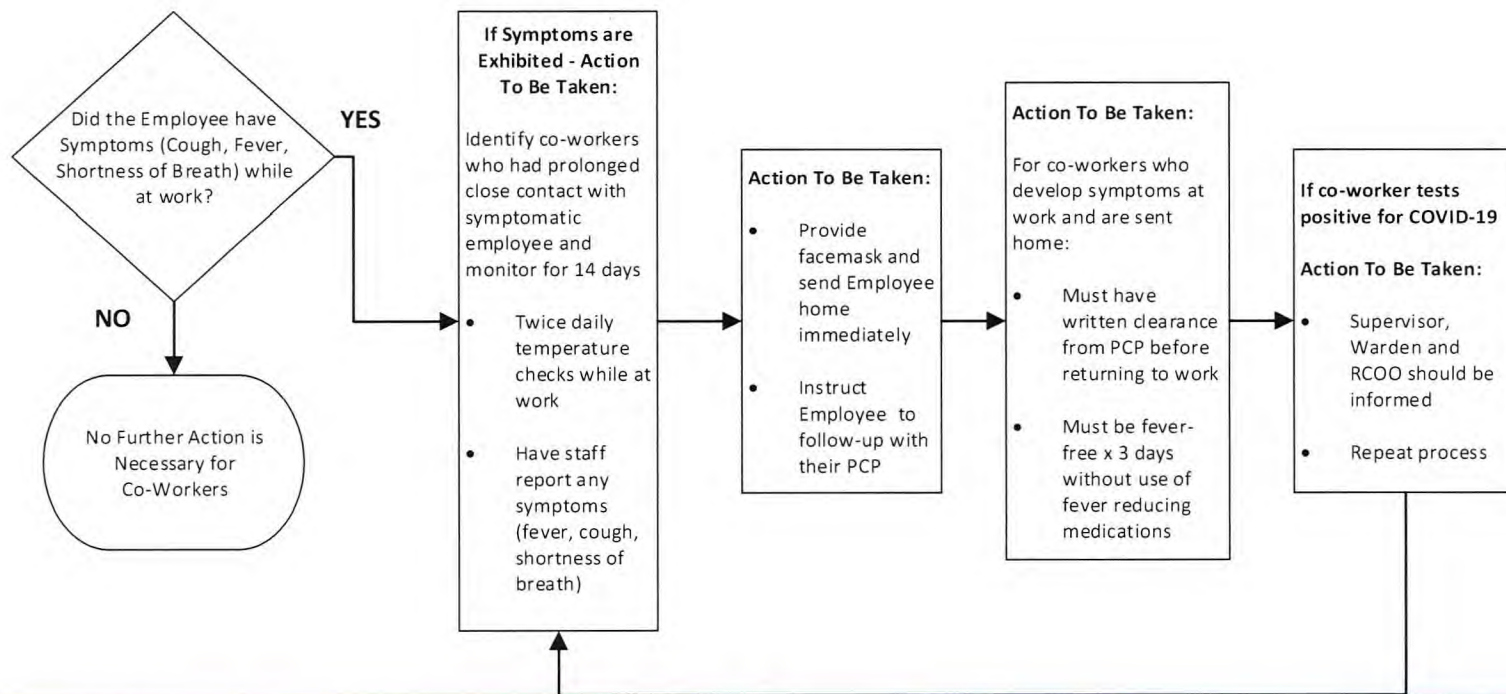
# If An Employee Calls Out W/ COVID 19

## If An Employee Calls Out Sick with Symptoms



# Handling Staff Who Test Positive

DOC Procedure for Handling Staff who Test Positive for COVID-19



# When to End Home Isolation and Return to Work

**People with COVID-19 who have stayed home (are home isolated) can stop home isolation and return to work under the following conditions:**

- If they have not been tested (to determine if they are still contagious):
  - No fever for at least 72 without fever reducing medications; AND
  - Other Symptoms have improved; AND
  - At least 7 days have passed since their symptoms first appeared
- If they will be tested (to determine if they are still contagious):
  - No longer have a fever (without the use of fever reducing medications); AND
  - Other Symptoms have improved; AND
  - They have received TWO negative tests in a row, 24 hours apart



# Wash Your Hands

Wash Your  
Hands for at  
Least 20  
Seconds





Don't Touch Your Face (or anyone else's)

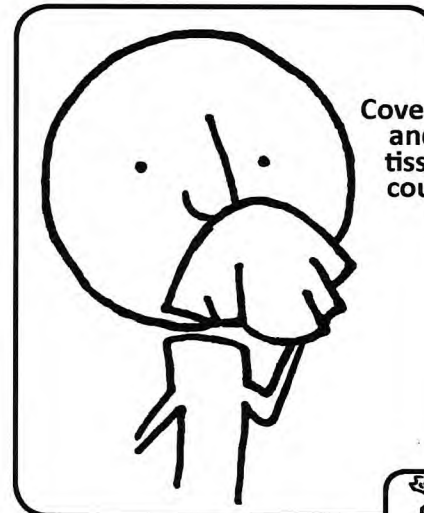
**Don't  
Touch  
Your  
Face**



Connecticut Department of Correction

# Cover Your Cough

# Cover Your Cough



Cover your mouth and nose with a tissue when you cough or sneeze or cough or sneeze into your upper sleeve, not your hands

Put your used tissue in the waste basket.



You may be asked to put on a surgical mask to protect others.



# Practice Social Distancing (Practice Makes Perfect)

